



ALBAJ GROUP OF COMPANIES

PROCESS EQUIPMENT & PROCESS PLANT SPECIALISTS SINCE 1976 IN PUNE, INDIA



<http://albij.com/>



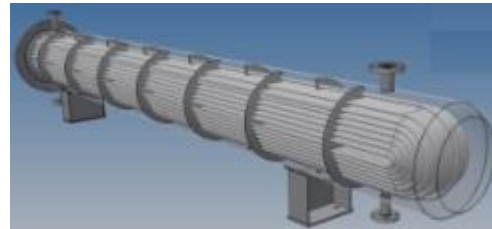
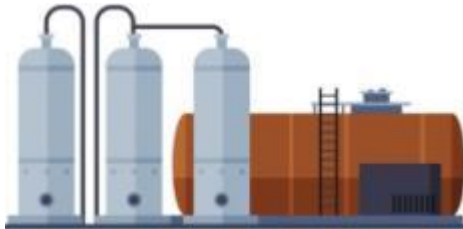
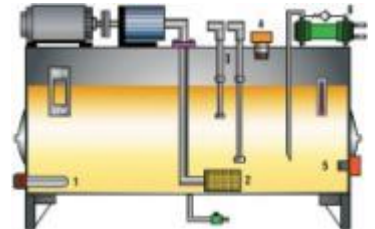
PESO
CCOE

ALBAJ GROUP'S BUSINESS IN A GLANCE:

ALBAJ Group is a multi-agency approved & recognized heavy-fabrication specialist since 1976, addressing several direct & indirect applications in Process Industries & Manufacturing Facilities: Tanks, Coded Pressure Vessels, De-aerators, Heat Exchangers, Boilers, Piping Spools, Skid-mounted Packages, Coolant & Lubricant Re-circulation Systems & similar relevant customized equipment for Oil & Gas, Petro-chemicals, Pharmaceuticals & Cosmetics, Paints & Chemicals, Food & Beverage (Milk, Sugar, Edible Oil), Combined Heat & Power (CHP) for IPPs & CPPs, Cement, Fertilizers & Agro-chemicals, Pulp & Paper, Textiles & Non-woven, Static- & Rotating-equipment, Rubber & Film, Metals & Alloys, to name a few.

PRODUCT BUSINESS

(Equipment design, manufacturing & in-plant system integration)

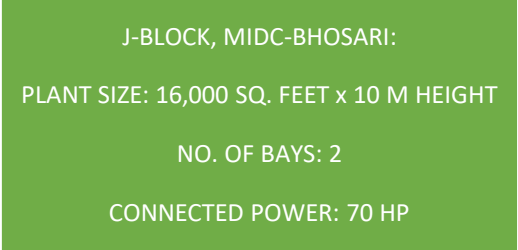
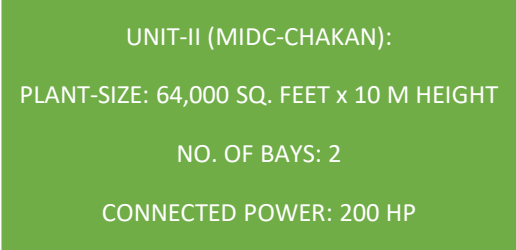
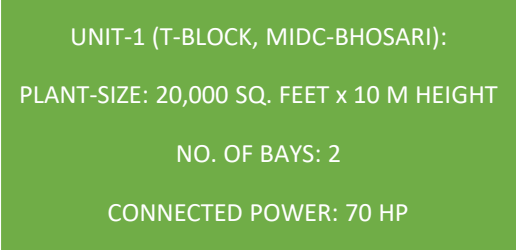
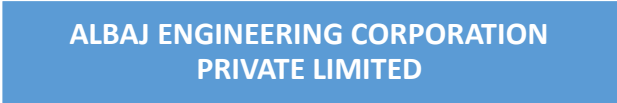


PROJECT BUSINESS

(Turnkey EPC solutions & site work)



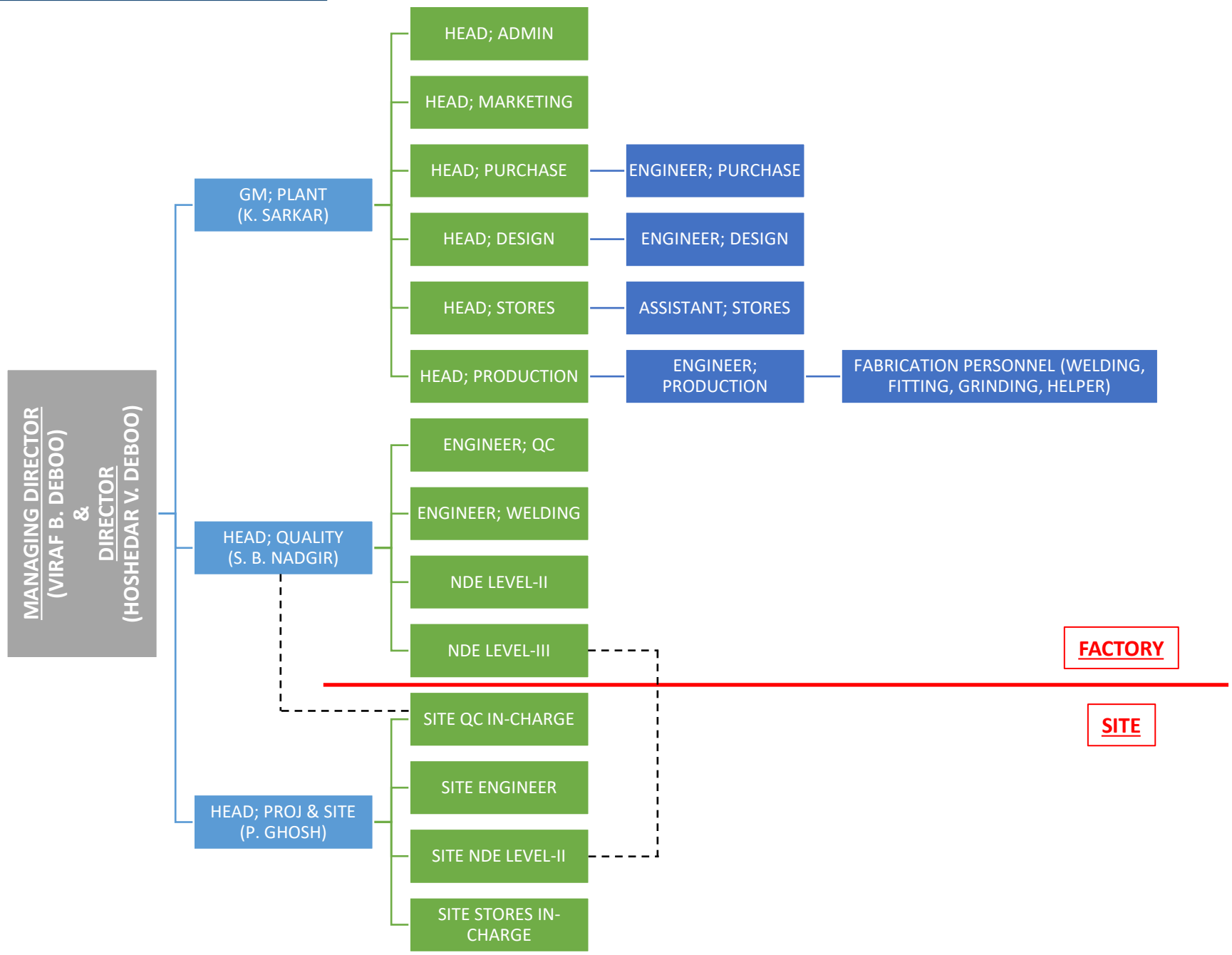
ORGANIZATIONAL STRUCTURE:



ALBAJ ENGINEERING CORPORATION'S NEW UNIT-II IN MIDC-CHAKAN:



ORGANIZATIONAL CHART:



APPLICATIONS ADDRESSED & INDUSTRIES SERVED:

Our products & solutions find their way into (Including, but not limited to):

- Oil & Gas Exploration & Production Facilities – On-shore, Off-shore, FPSO Installations
- LNG Tankers & Terminals / Natural Gas Compression & Pumping Stations
- Crude-oil Refineries & Petro-chemical Complexes
- Combined Heat & Power (CHP) Generation Plants for IPPs & CPPs (Conventional, renewable, hybrid)
- Natural Resources Extraction Facilities (Ferrous & Non-ferrous Ores)
- Continuous-process & Batch-process Manufacturing Facilities (Primary & Auxiliary Systems):
 - Industrial & Medical Gases
 - Paints; Chemicals & Plastics; Lubricants
 - Metals & Alloys; Cables & Wire Ropes
 - Rubber & Film; Fibre & Yarn; Textiles & Non-woven; Ropes
 - Pulp & Paper; Forest Products
 - Semi-conductors; Silica & Glass
 - Cement; Fertilizers & Agro-chemicals
 - Pharmaceuticals & Cosmetics; Food & Beverage
- Auxiliary Systems required to construct & assemble Heavy Industrial Machinery (Fixed, Within-plant Portable & Mobile):
 - Filtration & Re-circulation Systems for: Hydraulic-oil; Coolant; Metal-cutting Lubricant; Other Liquid Media
- Transportation Systems (Primary & Support Systems):
 - Railway (Locomotives & Coaches; Mobile Machinery)
 - Marine (Ports; Vessels; Floating Machinery)
 - Mobile & Portable: Machinery, Storage & Transfer Equipment

Most common Process Applications that we address in the above-mentioned Industries (Including, but not limited to):

- Bulk Heating, Storage & Transfer / Heat Exchange & Transfer
- Phase Separation
- Water & Effluent Treatment
- Handling & Exhaust of Toxic Gases
- Pipe-routing for supply of:
 - Industrial Utilities (Steam, Water, Compressed Air & Industrial Gases, Fuels) & Fire Hydrant
 - Fresh Ambient Air in Commercial, Industrial, Public & Medical Facilities; Medical Gases in Hospitals

OUR CLIENTELE ACROSS THE INDUSTRY LAND-SCAPE*:



* Government, Public Sector Undertakings (100% Government-owned + Public Private Partnerships), Private Sector Companies within India & overseas

NOTABLE PRODUCTS THAT WE SPECIALIZE IN:

Materials of Construction: Mild Steel, Carbon Steel, Stainless Steel, Alloy Steel, Duplex & Super-duplex Alloys, Exotic Alloys

Codes & Standards: ASME, NB, IBR, PESO, TEMA, IS

Scope of Work (With overall Project Management & Document Control + Liaise with TPIs as required & necessary):

- Engineering: Process calculation & optimization + Mechanical design & optimization + Lifting Analysis + Generation of fabrication drawings;
- Procurement: Raw material procurement + Electrical & instrumentation procurement;
- Construction: Complete machining & fabrication + In-factory system integration + Testing + Packing + Dispatch support;
- After-sales Support: MRO, Refurbishment, Retrofitting;

Product Range – Complete systems or components thereof (Including, but not limited to):

- **Complete Heat Exchangers:**
 - Air-cooled, Water-cooled, Shell-&-Tube, Calorifiers, Evaporators;
- **Pressure Vessels (For Air, Oxygen, Hydrogen, Nitrogen, other Industrial & Medical Gases, Water Expansion):**
 - Air Receivers;
 - LPG, Propane Bullets;
 - Deaerators, Storage & Re-circulation Tanks;
 - Volume Bottles;
- **Boilers:**
 - Complete Boiler Equipment including Steam Drum & Water Drum;
 - Super-heater / Economizer Coils;
 - Boiler Wall Panels;
 - All other boiler accessories;
- **Skids:**
 - Pressure Reducing & De-superheating Stations (PRDS); Flow Metering Skids; Gas Mixing & Gas Separation Skids;
 - Fluid Filtering & Re-circulation Skids, Chemical Injection Skids;
- **Piping:**
 - Pre-fabricated Piping Skids & Manifolds;
 - Steam & Hydraulic Piping & Distribution Headers;
 - Exotic materials fabrication such as stainless-steel RO & UF Headers, Duplex & Super Duplex Piping Spools & Skids;
- ... Along with **Base-frames, Structures, Access Ladders, Maintenance Platforms, Walk-ways, other Structural Fitments & Accessories** as required or necessary per good engineering practices;
- ... We also carry out **on-site installation of piping equipment & on-site erection of complete boiler equipment.**

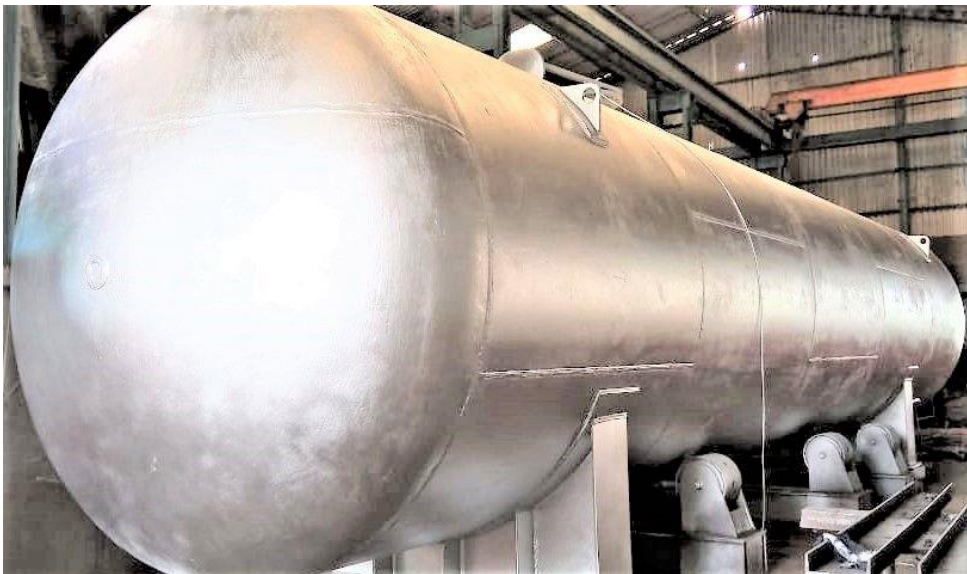
FACTORY PRODUCTION EXAMPLES (SKIDS, SYSTEM ASSEMBLIES):



FACTORY PRODUCTION EXAMPLES (TANKS, LPG BULLETS):



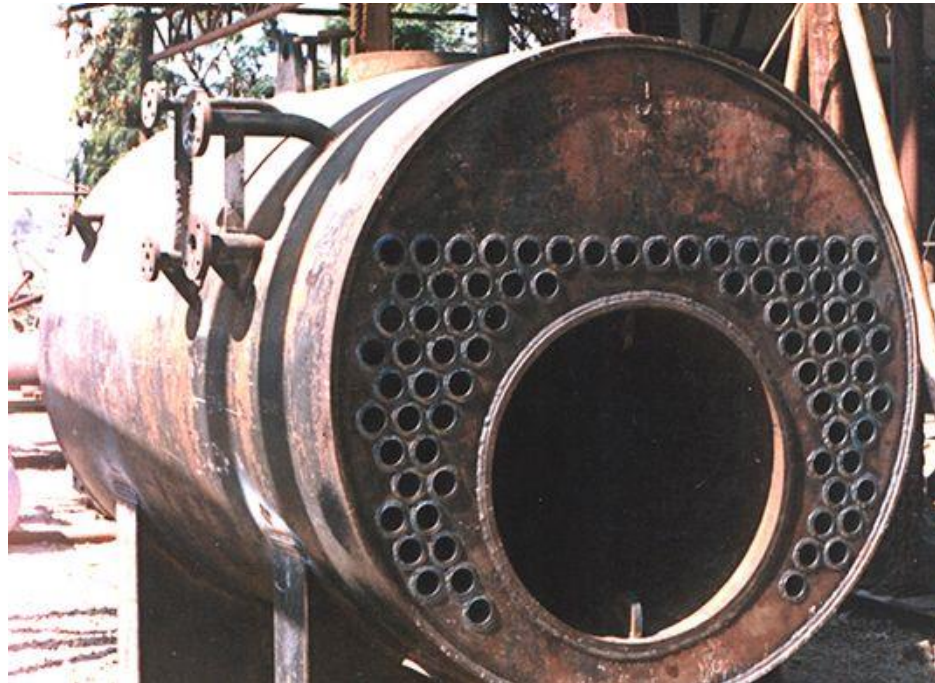
FACTORY PRODUCTION EXAMPLES (SURGE VESSELS, VOLUME BOTTLES):



FACTORY PRODUCTION EXAMPLES (BOILER DEAERATORS):



FACTORY PRODUCTION EXAMPLES (BOILER DRUMS, COILS & PANELS):



FACTORY PRODUCTION EXAMPLES (PROCESS PIPING & FLUID HEADERS):



FACTORY PRODUCTION EXAMPLES (DUPLEX & SUPER DUPLEX SS):



FACTORY PRODUCTION EXAMPLES (HEAT TRANSFER SYSTEMS):



MISC. FACTORY PRODUCTION EXAMPLES

Job: Tyre Ripper
Client: Godrej
Year: 2008



Job: Dryer With Casing
Client: Praj Industries
Year: 2023

Product: -BFG Combustor Shell
Client: - Thermax Ltd.
Year: - 2011



Job: PH Correction Tank
Client: Doosan
Year: 2009 - 10

SITE FABRICATION EXAMPLES (BULK STORAGE TANK FARMS):



SITE FABRICATION EXAMPLES (BOILER FOR POWER GENERATION):



SITE FABRICATION EXAMPLES (UTILITY PIPING):



SITE INSTALLATION EXAMPLES (STORAGE / TRANSFER SYSTEMS):



SOME OF OUR ESTEEMED CLIENTS:



WORKING RELATION WITH EXTERNAL AGENCIES:





PLEASE DO NOT HESITATE TO CONTACT US & VISIT OUR WORKS:

COMPANY NAME:	ALBAJ ENGINEERING CORPORATION PRIVATE LIMITED		VEE BEE INDUSTRIES
ADDRESS:	UNIT-I: S-22/23, T-BLOCK, MIDC-BHOSARI, PUNE 411026, MAHARASHTRA, INDIA	UNIT-II: PLOT # PAP-B-2, BHAMBOLI, PHASE-2, CHAKAN INDUSTRIAL AREA (MIDC), PUNE 410501, MAHARASHTRA, INDIA	J-238, MIDC-BHOSARI, PUNE 411026, MAHARASHTRA, INDIA
TEL.:	(+91)20.2712.2946 / (+91)20.4676.9112		(+91)20.2713.0484 / (+91)20.4676.6708
MANAGING DIRECTOR:	MR. VIRAF B. DEBOO: vbdeboo@albaj.com , vbdeboo@veebeeind.com		
DIRECTOR:	MR. HOSHEDAR V. DEBOO: hvdeboo@albaj.com		
GENERAL MANAGER (FACTORIES):	MR. KAMALES SARKAR: sarkark@albaj.com [EA TO GM: MS. CHITRA VIJAYAN: adminplant@albaj.com]		
PROJECTS:	MR. PRASHANT N. GHOSH: albaj-projects@albaj.com		
MARKETING & BUSINESS DEVELOPMENT:	MR. AMITAVA GHOSH: aghosh@albaj.com / marketing@albaj.com		MS. CHITRA VIJAYAN: marketing@veebeeind.com
INDIAN GOODS & SERVICE TAX ID:	GST # 27AAMCA0751D1ZY		GST # 27AAAFV1053C1ZO
OTHER STATUTORY TAX IDs:	COMPANY'S SENSITIVE INFORMATION: ALL CREDENTIALS VALIDATED, & WOULD BE MADE AVAILABLE ON REQUEST		COMPANY'S SENSITIVE INFORMATION: ALL CREDENTIALS VALIDATED, & WOULD BE MADE AVAILABLE ON REQUEST
CORPORATE ID NUMBER:			
IMPORT-EXPORT CODE & MEMBERSHIPS WITH INDUSTRY & TRADE ASSOCIATIONS:			
MICRO, MEDIUM & SMALL ENTERPRISE REGISTRATION ID:			
TECHNICAL REGISTRATIONS, CERTIFICATIONS & APPROVALS:			
PAST TRACK RECORD & DETAILS OF MANUFACTURING FACILITIES:			

Safety, quality, confidentiality as well as employee-, supplier- & client-satisfaction is our goal