



# ALBAJ GROUP OF COMPANIES

PROCESS EQUIPMENT & PROCESS PLANT SPECIALISTS SINCE 1976 IN PUNE, INDIA

[www.albaj.com](http://www.albaj.com)

[in https://www.linkedin.com/company/albaj-group/](https://www.linkedin.com/company/albaj-group/)



PESO  
CCOE



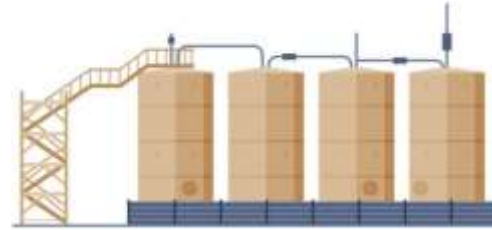
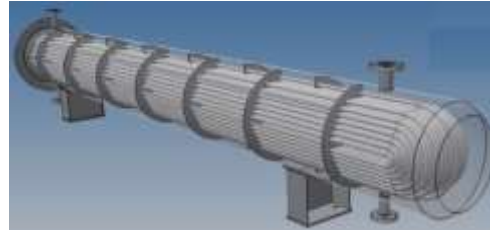
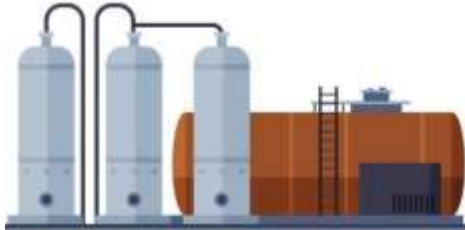
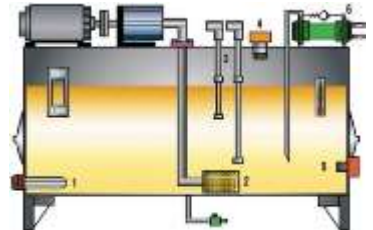
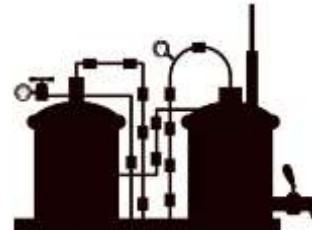
ENGINEERS  
INDIA LTD

# ALBAJ GROUP'S BUSINESS IN A GLANCE:

ALBAJ Group is a multi-agency approved & recognized heavy-fabrication specialist since 1976, addressing several direct & indirect applications in Process Industries & Manufacturing Facilities: Tanks, Coded Pressure Vessels, De-aerators, Heat Exchangers, Boilers, Piping Spools, Skid-mounted Packages, Coolant & Lubricant Re-circulation Systems & similar relevant customized equipment for Oil & Gas, Petro-chemicals, Pharmaceuticals & Cosmetics, Paints & Chemicals, Food & Beverage (Milk, Sugar, Edible Oil), Combined Heat & Power (CHP) for PPs & CPPs, Cement, Fertilizers & Agro-chemicals, Pulp & Paper, Textiles & Non-woven, Static- & Rotating-equipment, Rubber & Film, Metals & Alloys, to name a few.

## **PRODUCT BUSINESS**

*(Equipment design, manufacturing & in-plant system integration)*

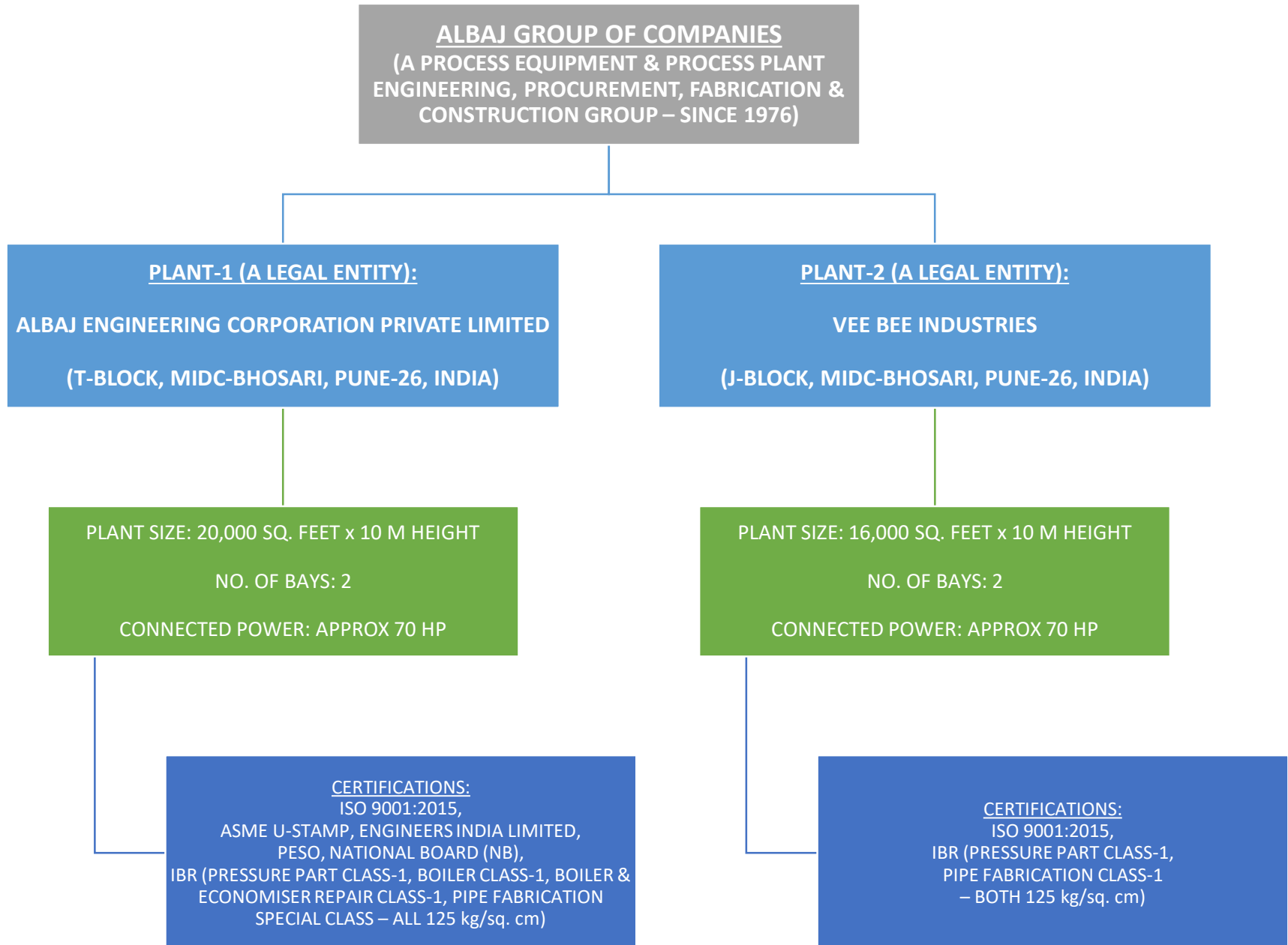


## **PROJECT BUSINESS**

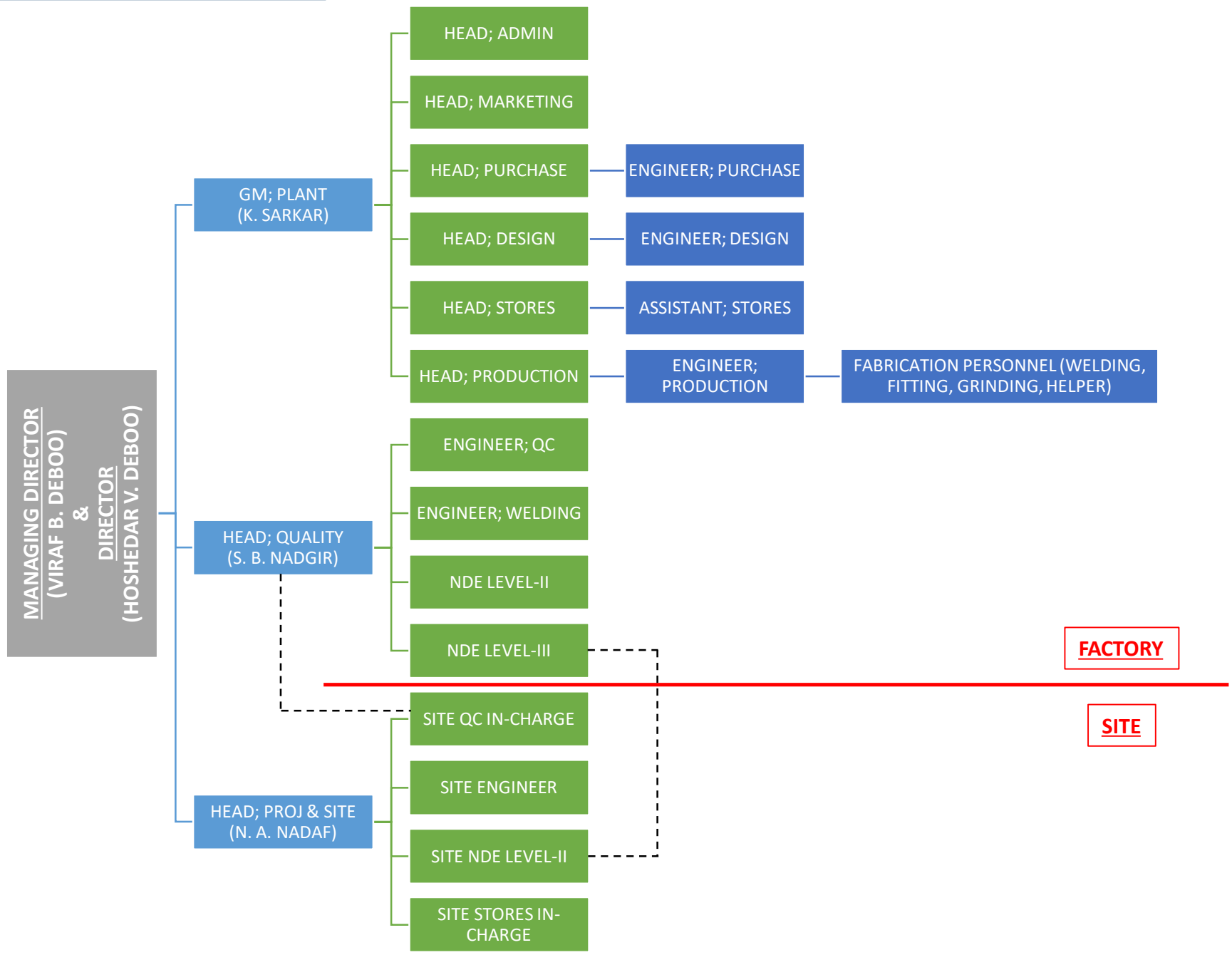
*(Turnkey EPC solutions & site work)*



# ORGANIZATIONAL STRUCTURE:



# ORGANIZATIONAL CHART:



# **APPLICATIONS ADDRESSED & INDUSTRIES SERVED:**

**Our products & solutions find their way into (Including, but not limited to):**

- Oil & Gas Exploration & Production Facilities – On-shore, Off-shore, FPSO Installations
- LNG Tankers & Terminals / Natural Gas Compression & Pumping Stations
- Crude-oil Refineries & Petro-chemical Complexes
- Combined Heat & Power (CHP) Generation Plants for IPPs & CPPs (Conventional, renewable, hybrid)
- Natural Resources Extraction Facilities (Ferrous & Non-ferrous Ores)
- Continuous-process & Batch-process Manufacturing Facilities (Primary & Auxiliary Systems):
  - Industrial & Medical Gases
  - Paints; Chemicals & Plastics; Lubricants
  - Metals & Alloys; Cables & Wire Ropes
  - Rubber & Film; Fibre & Yarn; Textiles & Non-woven; Ropes
  - Pulp & Paper; Forest Products
  - Semi-conductors; Silica & Glass
  - Cement; Fertilizers & Agro-chemicals
  - Pharmaceuticals & Cosmetics; Food & Beverage
- Auxiliary Systems required to construct & assemble Heavy Industrial Machinery (Fixed, Within-plant Portable & Mobile):
  - Filtration & Re-circulation Systems for: Hydraulic-oil; Coolant; Metal-cutting Lubricant; Other Liquid Media
- Transportation Systems (Primary & Support Systems):
  - Railway (Locomotives & Coaches; Mobile Machinery)
  - Marine (Ports; Vessels; Floating Machinery)
  - Mobile & Portable: Machinery, Storage & Transfer Equipment

**Most common Process Applications that we address in the above-mentioned Industries (Including, but not limited to):**

- Bulk Heating, Storage & Transfer / Heat Exchange & Transfer
- Phase Separation
- Water & Effluent Treatment
- Handling & Exhaust of Toxic Gases
- Pipe-routing for supply of:
  - Industrial Utilities (Steam, Water, Compressed Air & Industrial Gases, Fuels) & Fire Hydrant
  - Fresh Ambient Air in Commercial, Industrial, Public & Medical Facilities; Medical Gases in Hospitals

# OUR CLIENTELE ACROSS THE INDUSTRY LAND-SCAPE\*:



\* Government, Public Sector Undertakings (100% Government-owned + Public Private Partnerships), Private Sector Companies within India & overseas

# NOTABLE PRODUCTS THAT WE SPECIALIZE IN:

**Materials of Construction:** Mild Steel, Carbon Steel, Stainless Steel, Alloy Steel, Duplex & Super-duplex Alloys, Exotic Alloys

**Codes & Standards:** ASME, NB, IBR, PESO, TEMA, IS

**Scope of Work** (With overall Project Management & Document Control + Liaise with TPIs as required & necessary):

- Engineering: Process calculation & optimization + Mechanical design & optimization + Lifting Analysis + Generation of fabrication drawings;
- Procurement: Raw material procurement + Electrical & instrumentation procurement;
- Construction: Complete machining & fabrication + In-factory system integration + Testing + Packing + Dispatch support;
- After-sales Support: MRO, Refurbishment, Retrofitting;

**Product Range** – Complete systems or components thereof (Including, but not limited to):

- **Complete Heat Exchangers:**
  - Air-cooled, Water-cooled, Shell-&-Tube, Calorifiers, Evaporators;
- **Pressure Vessels (For Air, Oxygen, Hydrogen, Nitrogen, other Industrial & Medical Gases, Water Expansion):**
  - Air Receivers;
  - LPG, Propane Bullets;
  - Deaerators, Storage & Re-circulation Tanks;
  - Volume Bottles;
- **Boilers:**
  - Complete Boiler Equipment including Steam Drum & Water Drum;
  - Super-heater / Economizer Coils;
  - Boiler Wall Panels;
  - All other boiler accessories;
- **Skids:**
  - Pressure Reducing & De-superheating Stations (PRDS); Flow Metering Skids; Gas Mixing & Gas Separation Skids;
  - Fluid Filtering & Re-circulation Skids, Chemical Injection Skids;
- **Piping:**
  - Pre-fabricated Piping Skids & Manifolds;
  - Steam & Hydraulic Piping & Distribution Headers;
  - Exotic materials fabrication such as stainless-steel RO & UF Headers, Duplex & Super Duplex Piping Spools & Skids;
- ... Along with **Base-frames, Structures, Access Ladders, Maintenance Platforms, Walk-ways, other Structural Fitments & Accessories** as required or necessary per good engineering practices;
- ... We also carry out **on-site installation of piping equipment & on-site erection of complete boiler equipment.**



# FACTORY PRODUCTION EXAMPLES (SKIDS, SYSTEM ASSEMBLIES):





# FACTORY PRODUCTION EXAMPLES (DEAERATORS, TANKS, LPG BULLETS...):



# FACTORY PRODUCTION EXAMPLES (SURGE VESSELS, AIR RECEIVERS...):



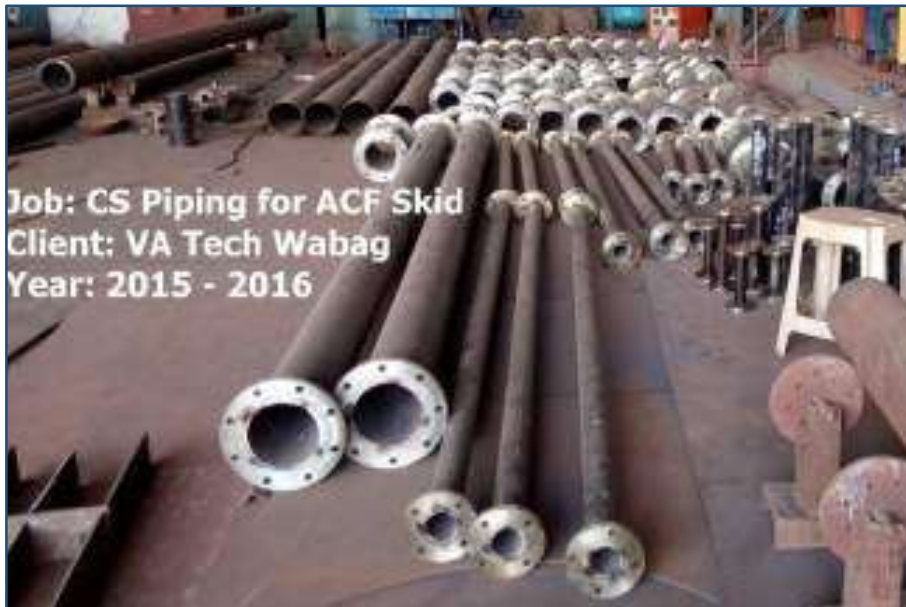


**FACTORY PRODUCTION EXAMPLES (BOILER DRUMS, BOILER COILS & PANELS):**





## FACTORY PRODUCTION EXAMPLES (PROCESS PIPING & DISTRIBUTION HEADERS):





# FACTORY PRODUCTION EXAMPLES (DUPLEX & SUPER DUPLEX SS COMPONENTS):





# FACTORY PRODUCTION EXAMPLES (HEAT TRANSFER SYSTEMS):



## FACTORY PRODUCTION EXAMPLES ( MISCELLANEOUS):

**Job: Tyre Ripper**  
**Client: Godrej**  
**Year: 2008**



**Job: HFG Conductor Shell**  
**Client: Thermo Ltd.**  
**Project: Sosa Goa**  
**Year of Mfg: 2011**



**Job: PH Correction Tank**  
**Client: Doosan**  
**Year: 2009 - 10**



# SITE FABRICATION EXAMPLES (BULK STORAGE TANK FARMS):



## SITE FABRICATION EXAMPLES (BOILER FOR POWER GENERATION):





# SITE INSTALLATION EXAMPLES (UTILITY PIPING):





## SITE INSTALLATION EXAMPLES (OIL AND GAS STORAGE SYSTEMS):



## SOME OF OUR ESTEEMED CLIENTS:





# WORKING RELATION WITH EXTERNAL AGENCIES:



# PLEASE DO NOT HESITATE TO CONTACT US & VISIT OUR WORKS:

	PLANT-1:	PLANT-2:
<b>COMPANY NAME:</b>	ALBAJ ENGINEERING CORPORATION PRIVATE LIMITED	VEE BEE INDUSTRIES
<b>ADDRESS:</b>	S-22/23, T-BLOCK, MIDC-BHOSARI, PUNE 411026, MAHARASHTRA, INDIA	J-238, MIDC-BHOSARI, PUNE 411026, MAHARASHTRA, INDIA
<b>TEL.:</b>	(+91)20.2712.2946 (+91)20.4676.9112	(+91)20.2713.0484 (+91)20.4676.6708
<b>MANAGING DIRECTOR:</b>	MR. VIRAF DEBOO: <a href="mailto:vbdeboo@albaj.com">vbdeboo@albaj.com</a> , <a href="mailto:vbdeboo@veebecind.com">vbdeboo@veebecind.com</a>	
<b>DIRECTOR:</b>	MR. HOSHEDAR DEBOO: <a href="mailto:hvdeboo@albaj.com">hvdeboo@albaj.com</a>	
<b>GENERAL MANAGERS (PLANTS / PROJECTS):</b>	MR. KAMLESH SARKAR: <a href="mailto:sarkark@albaj.com">sarkark@albaj.com</a> / MR. N. A. NADAF: <a href="mailto:boiler@albaj.com">boiler@albaj.com</a>	
<b>MARKETING &amp; BUSINESS DEVELOPMENT:</b>	MR. HUSAIN KANCHWALA: <a href="mailto:marketing@albaj.com">marketing@albaj.com</a>	
<b>INDIAN GOODS &amp; SERVICE TAX &amp; OTHER STATUTORY TAX IDs:</b>	GST # 27AAMCA0751D1ZY	GST # 27AAAFV1053C1ZO
<b>CORPORATE ID NUMBER:</b>	COMPANY'S SENSITIVE INFORMATION: ALL CREDENTIALS VALIDATED, & WOULD BE MADE AVAILABLE ON REQUEST	COMPANY'S SENSITIVE INFORMATION: ALL CREDENTIALS VALIDATED, & WOULD BE MADE AVAILABLE ON REQUEST
<b>IMPORT-EXPORT CODE &amp; MEMBERSHIPS WITH INDUSTRY &amp; TRADE ASSOCIATIONS:</b>		
<b>MICRO, MEDIUM &amp; SMALL ENTERPRISE REGISTRATION ID:</b>		
<b>TECHNICAL REGISTRATIONS, CERTIFICATIONS &amp; APPROVALS:</b>		
<b>PAST TRACK RECORD &amp; DETAILS OF MANUFACTURING FACILITIES:</b>		

Safety, quality, confidentiality as well as employee-, supplier- & client-satisfaction is our goal